



BioView

Circulating Tumor Cells Detection and Characterization

BioView's Duet scanning platforms automate the imaging, detection and analysis of rare and circulating tumor cells.

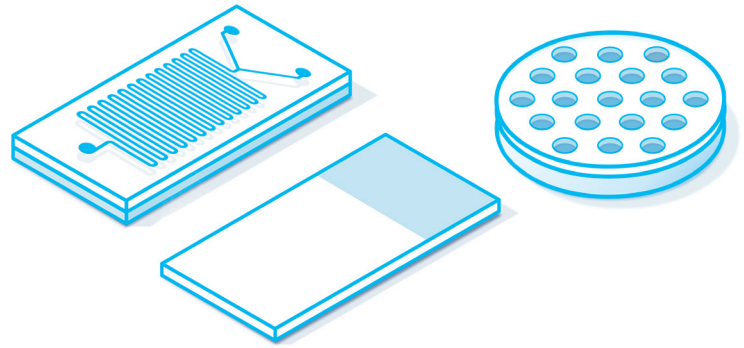
The scanning solutions are designed to accommodate both the need for CTC enumeration and retrieval of cellular and signal characteristics of captured cells, utilizing AI deep learning analysis algorithms.

Developed and perfected in collaboration with leading cancer research centers worldwide

BioView's automated imaging and analysis platforms provide ideal solutions for both clinical and research laboratories who wish to enhance their productivity and assay development processes.

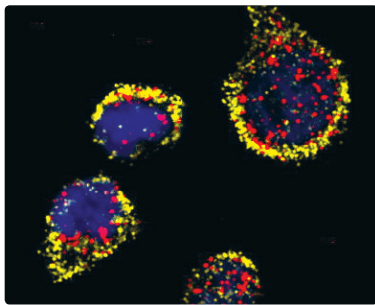
Custom-fitted to Various Microfluidic Chip and Cell Filtration devices

Designed to support automated imaging of various enrichment techniques independent of specific geometric pattern, 3D structure and antibodies used.

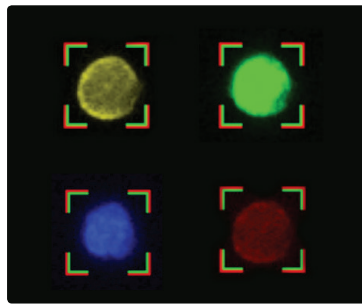


Fully Adaptable to All Fluorescent Markers

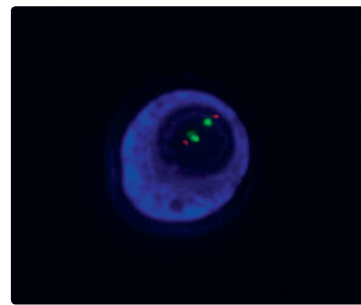
Supports imaging & analysis of any combination of fluorescent markers, antibodies / RNA / DNA FISH, simultaneously or consecutively hybridized.



CTC hybridized with mRNA FISH probes



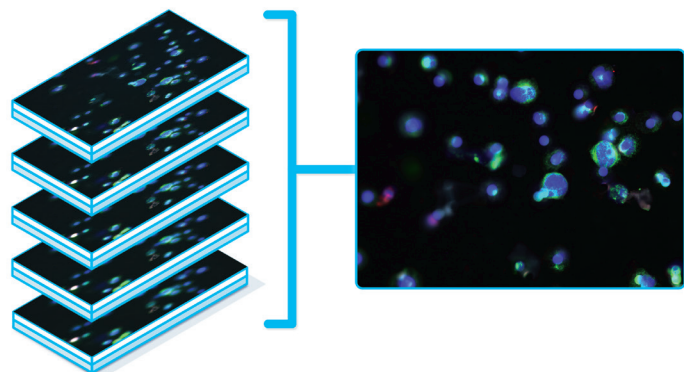
CTC hybridized with DAPI, FITC, Texas Red and APC fluorophores



CTC co-hybridized with immunofluorescent antibody and FISH

High Throughput

Combination of best of class optics and unique imaging algorithms specifically tailored to facilitate rapid 3D capture of all cells within the sample.



Multiple focal layer are automatically captured during unattended scan process

Automated CTC Detection

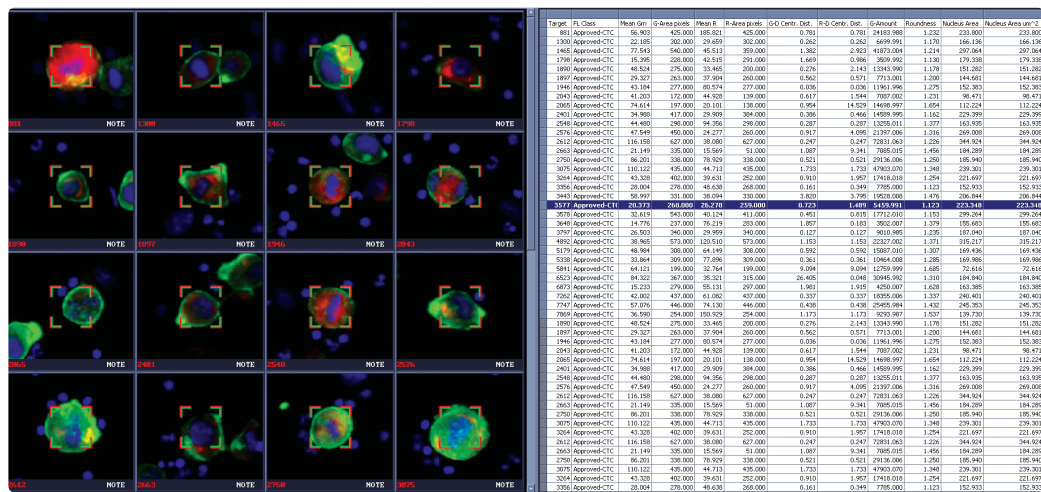
Detection of CTCs according to assay specific markers. As scan progresses system sorts cells per their signal content. Fully adjustable cell morphology and signal attributes gating criteria for positive event detection.

BioView's advanced imaging and analysis algorithms ensure high sensitivity scanning for the detection of rare positive events present in sample without sacrificing specificity.

Elaborate Set of AI- Deep Learning Algorithmic Tools

Advanced assay specific AI algorithms are combined with, Biometric - cellular and signal attributes such as area, roundness, elongation, intensity and others, are automatically applied during scan and presented to operator per captured cell.

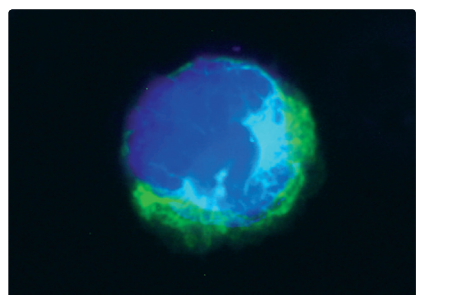
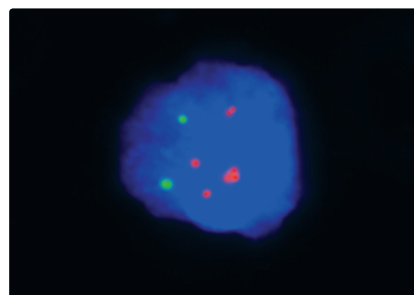
Biometric data is combined to form assay specific CTC gating criteria as well as assist in assay development. Data can be seamlessly exported to Excel spread sheet.



Detected circulating tumor cells next to excel data sheet presenting calculated cellular and signal attributes of each cell.

Targeted Imaging

Support multiple automated imaging and analysis of same cells consecutively hybridized with different markers.



Circulating tumor cell detected based on its fluorescent antibodies. Same cell automatically relocated, captured and analyzed after sample was hybridized with FISH probes.

BioView's CTC Imaging and Analysis Solution:

- Automatically captures and detects all CTC's
- Eliminates tedious and time-consuming manual searches
- Validate and report results at any time and location of your choice

In the USA, The Duet™ system is intended for in-vitro diagnostic use as an aid to the pathologist in the analysis of Hematopoietic, Amnio, UroVysion, ALK and HER2/neu FISH.

In the EU, The Duet™ system is intended for in-vitro diagnostic use as an aiding tool to the pathologist in the detection, classification and counting of cells of interests based on color, intensity, size, pattern and shape. It is the end user responsibility to validate the use in combination of the Duet system with commercial reagents and materials for a specific clinical application. The Duet system is for professional use only.

www.bioview.com

North America and South America

David Kutas

President & CEO BioView Inc.

44 Manning Rd.

Billerica, MA 01821, USA

Tel: +1 978 670 4741

sales-usa@bioview.co.il

Global

Elad Kfir

VP Marketing, BioView Ltd.

3 Pekeris St.

Rehovot 7670203, Israel

Tel: +972 54 660 4003

sales-row@bioview.co.il

