

# SoloWeb

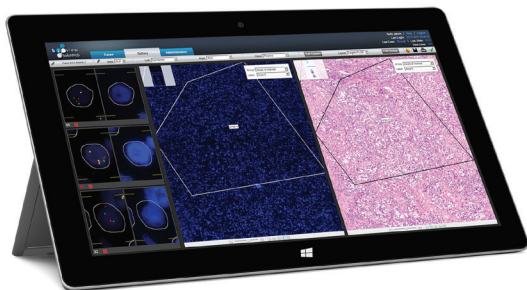


## Web Based Review, Analysis and Reporting Software

BioView's SoloWeb provides scalable, web-based review, analysis and reporting capabilities, enabling streamlining of the laboratory reporting steps for tissue and cell suspension samples scanned with BioView's imaging and analysis systems, from any location across the globe via internet access.

SoloWeb is designed to optimize the workflow for laboratory technicians, supervisors and pathologists, centralizing the user management and providing an integrated view of patient demographics and clinical data.

SoloWeb is based on BioView's experience working with industry leaders, hospitals and laboratories, to provide optimized solutions for connectivity between the lab and the healthcare provider, as well as to increase productivity and efficiency of the laboratory.



### Access Cases Remotely via Standard Web-Browsers

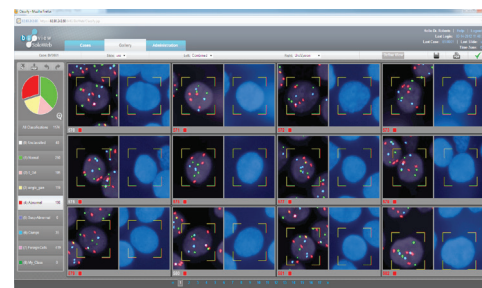


### Setup Free

No installation required by the end-user

### Intuitive and Responsive User Interface

- Gallery presentation of classified cells
- Drag and drop cell re-classification interface
- Live graphic presentation of cell distribution based on signal patterns
- Individual filters and combined image view
- Z-stacks/focus scroll
- Zoom in/out



UroVysion™ hybridized slide analyzed via SoloWeb. UroVysion is a Trademark of Abbott Molecular

## Remote Case Sign-Off

- PDF / XML / CSV report formats
- Integration of Selected Images to Report
- Save selected images to remote user computer
- Electronic signature
- Customized logo per user
- Free-text case notes

## Lab Information System Integration

- Standard, flexible web-based integration protocol
- Import BioView case data into local LIS

## Supervisor and Administrative Controls

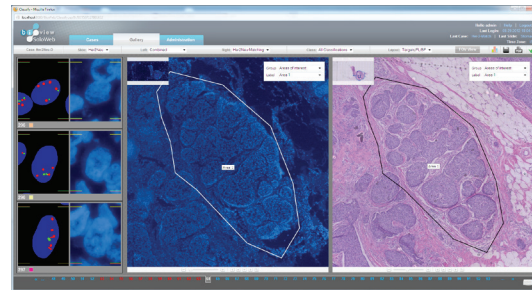
- Easy, centralized management of users and groups
- Flexible performance reports per account
- Recent activity data

## HIPAA Compliance

- SoloWeb is implemented with the appropriate technical, administrative and physical security safeguards, according to Appendix A Subpart C of Part 164, of HIPAA Security Standards.
- Access control and User authentication includes sophisticated password policy and account management policy, protected and encrypted user credentials, and encrypted slide data.
- BioView's FISH application is for use in conjunction with the Duet systems.

## Streamlined Case Workflow

- Role based account privileges
- Active cases list per user
- Assignment of cases with status indicators to specific users or groups
- Email notification upon case assignment
- History of case assignments presentation in chronological order

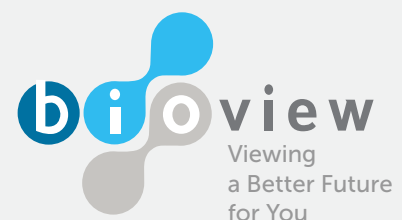


Region of interest selected from H&E stained sample and matched with parallel hybridized section via SoloWeb

[www.bioview.co.il](http://www.bioview.co.il)

BioView Ltd  
3 Pakris Street  
Rehovot, Israel 76702  
Tel: +972 8 936 6868  
Fax: +972 8 936 6869

BioView Inc.  
44 Manning Road  
Billerica, MA 01821  
Tel: +1 978 670 4741  
Fax: +1 978 670 4740  
+1 877 742 8462



Cat# BRO-SLW-02