

BIOVIEW AUTOMATED CIRCULATING TUMOR CELLS DETECTION APPLICATION

BioView's scanning platform provides automated imaging and analysis solutions for rare cell and circulating tumor cell detection.

A scanning solution designed to accommodate both the need for CTC enumeration and retrieval of cellular and marker characteristics of captured cells.

BioView's scanning platform incorporates field-proven algorithms, developed and perfected in collaboration with leading cancer research centers worldwide.

BioView's automated imaging and analysis scanning platform is the ideal solution for both clinical and research laboratories wishing to enhance their productivity and assay development processes.

SCAN FLEXIBILITY

Innovative LED Fluorescent Light Source Engine

LED Fluorescent light engine provides stable, uniform illumination for more than 10,000 hours of operation, ensuring consistent scan results unaffected by light fluctuation or degradation.

Rapid Automatic Imaging and Analysis

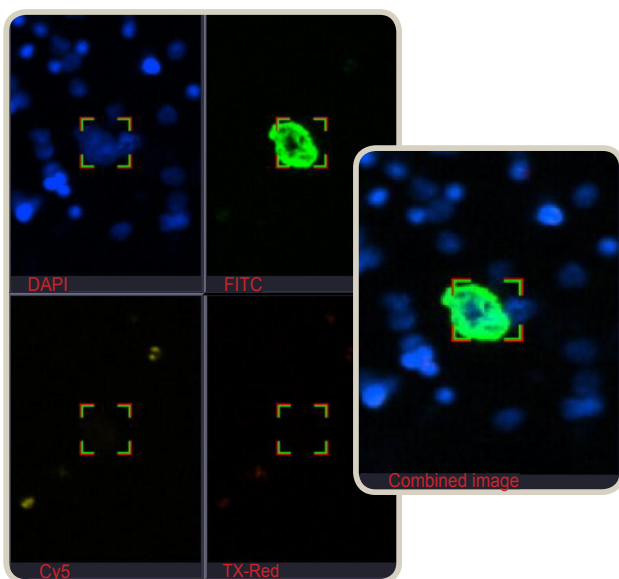
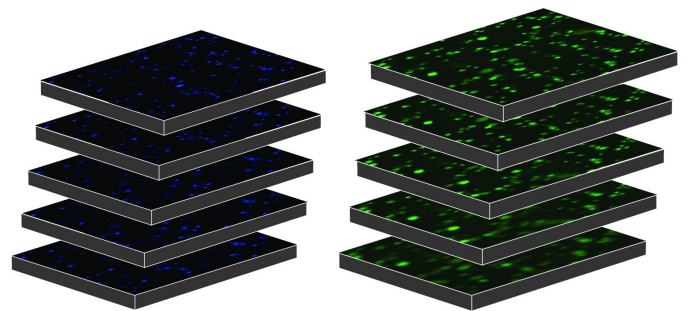
Automated imaging and analysis of millions of cells from enriched or raw samples.

Adaptable to any Fluorescent Markers

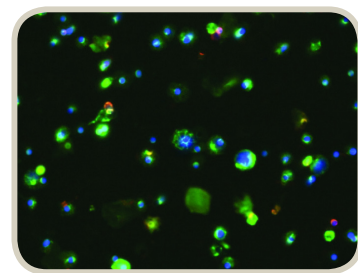
Analysis of up to 6 different fluorescent markers simultaneously hybridized.

Automatic Detection and Capture of Cells in Different Focal Planes

Automated capture and data analysis from different focal planes with focus depth coverage of up to 200 microns.



Four filter automatic scan using DAPI, Cy5, TX-Red and FITC filters. Filter images are combined into one informative image.



Combined image created from multiple z- stack images

Automatic Relocation of Targets for Manual Observation

Automatic navigation to cells captured during an automated scan, allowing visualization of targeted cells under the microscope eyepiece for further examination.

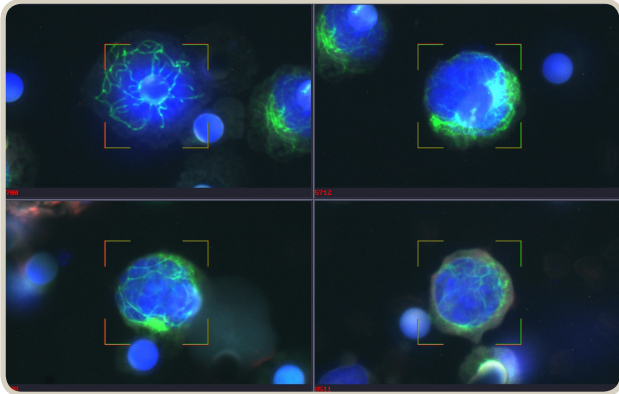
Relocate Cells on a Different Microscope

Automatic generation of coordinates list to allow relocation of targeted cells on a different microscope.

Application Versatility

Automated Imaging and Analysis Using Any Optical Resolution

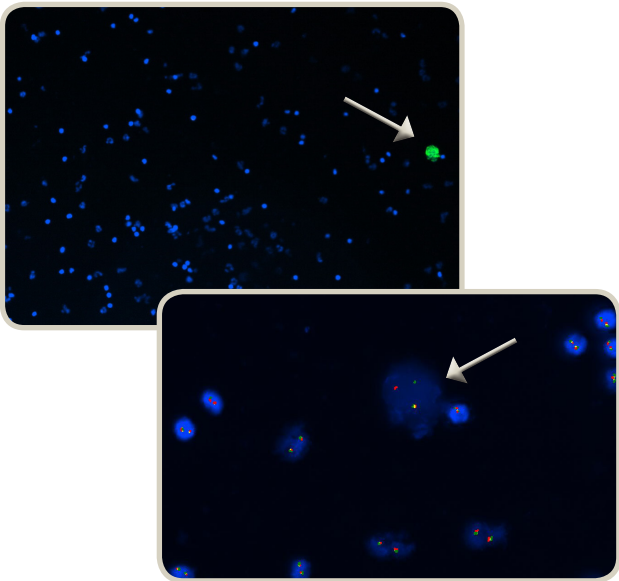
Objective magnification can be chosen to suit the lab's needs.



Cytokeratin positive CTC automatically captured using x60 oil objective

Target-FISH Application

Automatic matching between two separate scans performed on same slide with two different stains, such as immuno-fluorescent stain and FISH. T-FISH application can be utilized to characterize the genetic aberration of targeted CTC.



CTC automatically identified by IFL marker, automatically revisited and imaged after sample hybridized with FISH probes

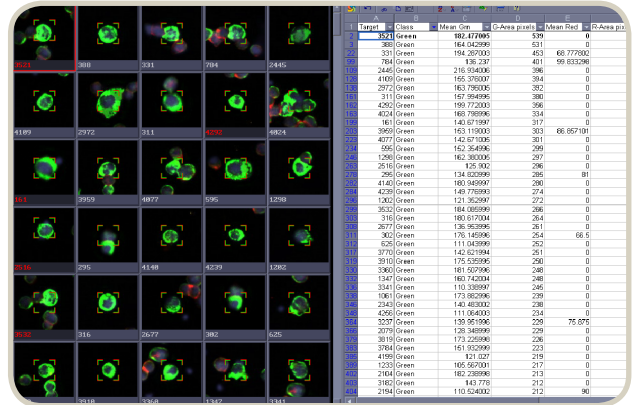
Analysis Accuracy

High-Sensitivity and Specificity Scan

Advanced imaging and detection algorithms ensure high sensitivity scanning for the detection of rare positive events present in sample without sacrificing specificity.

Cellular and Biomarker Attributes Provided per Cell

Cellular morphological attributes such as size and roundness and biomarker characteristics such as DAPI average intensity, marker intensity, standard deviation, signal area and more, are automatically measured and recorded per captured cell. Recorded information is seamlessly exported to electronic data sheet to greatly assist in assay development and analysis.



Captured cells presented next to their recorded measured attributes in data sheet

Innovative Offline Review and Analysis Tools

User-friendly, intuitive offline review tools reduce analysis and reporting time to a few minutes.

BioView delivers a line of outstanding cell imaging technology platforms for the analysis of samples stained using morphological, immunohistochemical and FISH markers.

BioView's unique automated imaging and analysis solutions for the detection and of rare cells greatly enhances research and clinical laboratory productivity and assay development process.



BioView Ltd
3 Pakris Street
Rehovot, Israel 76702
Tel: +972 8 936 6868
Fax: +972 8 936 6869

BioView Inc.
44 Manning Road
Billerica, MA 01821
Tel: +1 978 670 4741
Fax: +1 978 670 4740